

Light efficiency:

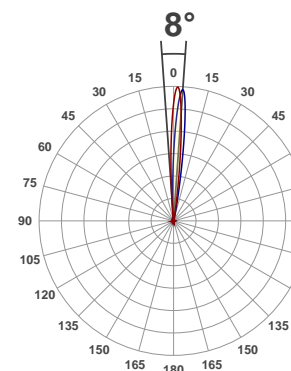
28 Lumen/Watt

Light quality:

CRI: 73.0

Color temperature:

7737 K



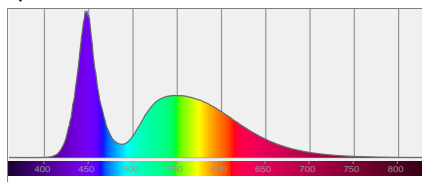
Product name:
Fuze Par Z175

Test:
Whitie

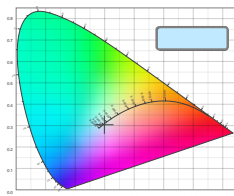
Date:
4/13/2017

Output: 1801 lm Power consumption: 63.4 W Peak: 48963 cd

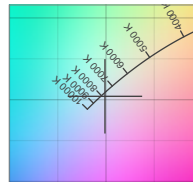
Spectral distribution



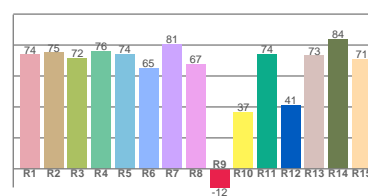
Color coordinates



Zoom color point

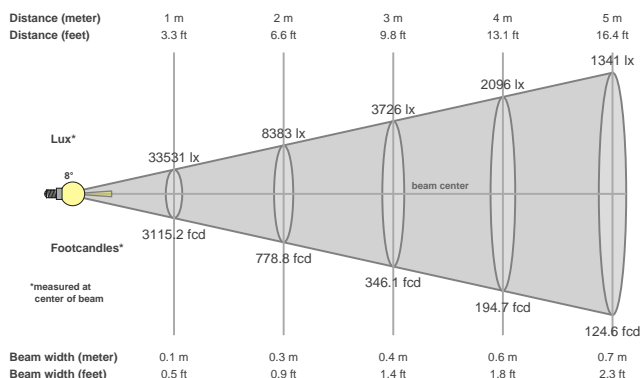


CRI R values



Color temperature	Color rendering index	Red component	Color fidelity	Color gamut	Color quality scale	Color coordinate cie 1931	Color coordinate cie 1931	Color coordinate	Color coordinate	Color divition from black body
CCT	CRI	CRI R9	TM30 Rf	TM30 Rg	CQS	x	y	u	v	Δuv
7737 K	73.0	-12.1	67.5	94.7	68.6	0.299	0.304	0.198	0.302	0.0056

Beam details



Beam angles

Beam angle 50%	Field angle 10%	Cutoff angle 2,5%
8°	14.3°	19.6°

Beam intensities

Peak intensity	Int. ratio in 120° cone	Int. ratio in 90° cone
48963 cd	1.0%	1.0%

Power

Power	Power factor	Power frequency
63.4 W	0.98	60 Hz

Nominal voltage	Voltage	Current
230 V	115 V	0.565 A

Beam intensities from 1-20m

1m	2m	3m	4m	5m	6m	7m	8m	9m	10m	11m	12m	13m	14m	15m	16m	17m	18m	19m	20m
3.3ft	6.6ft	9.8ft	13.1ft	16.4ft	19.7ft	23ft	26.2ft	29.5ft	32.8ft	36.1ft	39.4ft	42.7ft	45.9ft	49.2ft	52.5ft	55.8ft	59.1ft	62.3ft	65.6ft
33531lx	8383lx	3726lx	2096lx	1341lx	931lx	684lx	524lx	414lx	335lx	277lx	233lx	198lx	171lx	149lx	131lx	116lx	103lx	93lx	84lx
3115.2fcd	778.8fcd	346.1fcd	194.7fcd	124.6fcd	86.5fcd	63.6fcd	48.7fcd	38.5fcd	31.2fcd	25.7fcd	21.6fcd	18.4fcd	15.9fcd	13.8fcd	12.2fcd	10.8fcd	9.6fcd	8.6fcd	7.8fcd